



The Leeds
Teaching Hospitals
NHS Trust

ppm+

SNOMED

USER GUIDE



#LeedsDigitalWay

CONNECTS • TRANSFORMS • IMPROVES



Contents page

How to find Problem/Diagnosis code on SNOMED ----- **Pages 3-4**

Useful Contacts ----- **Page 5**

For further information please contact:

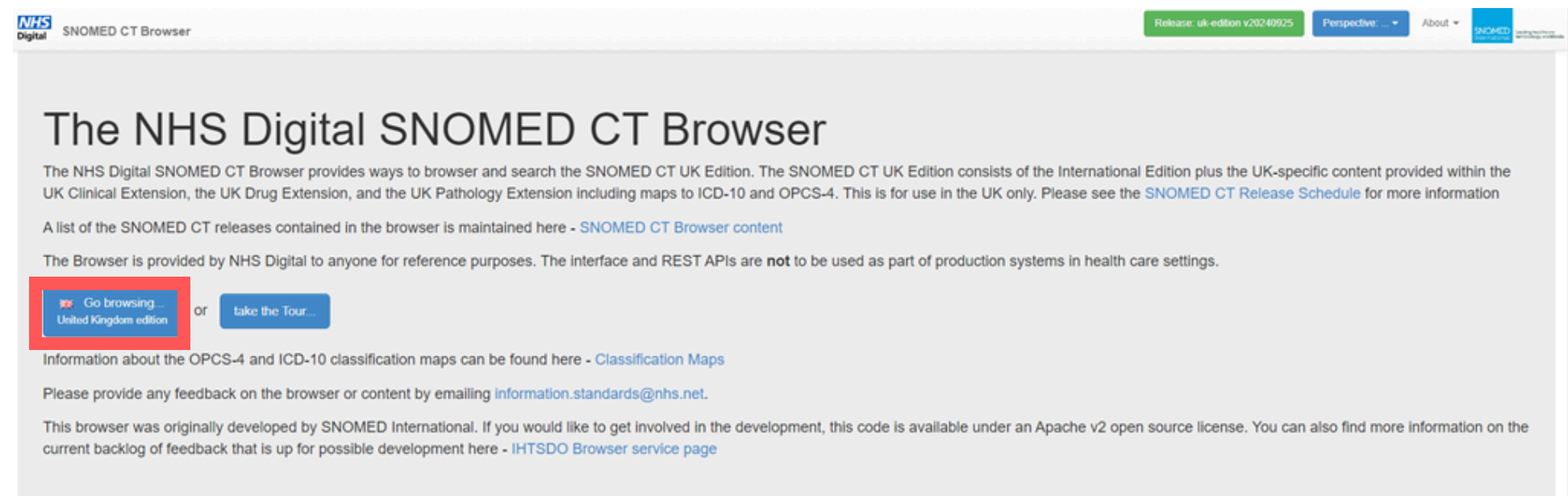
 leedsth-tr.ImplementationTeam@nhs.net

How to find Problem/Diagnosis code on SNOMED

If Condition/Diagnosis DOES NOT exist on PPM+ you can look up the SNOMED Code at - <https://termbrowser.nhs.uk> and follow the guide below

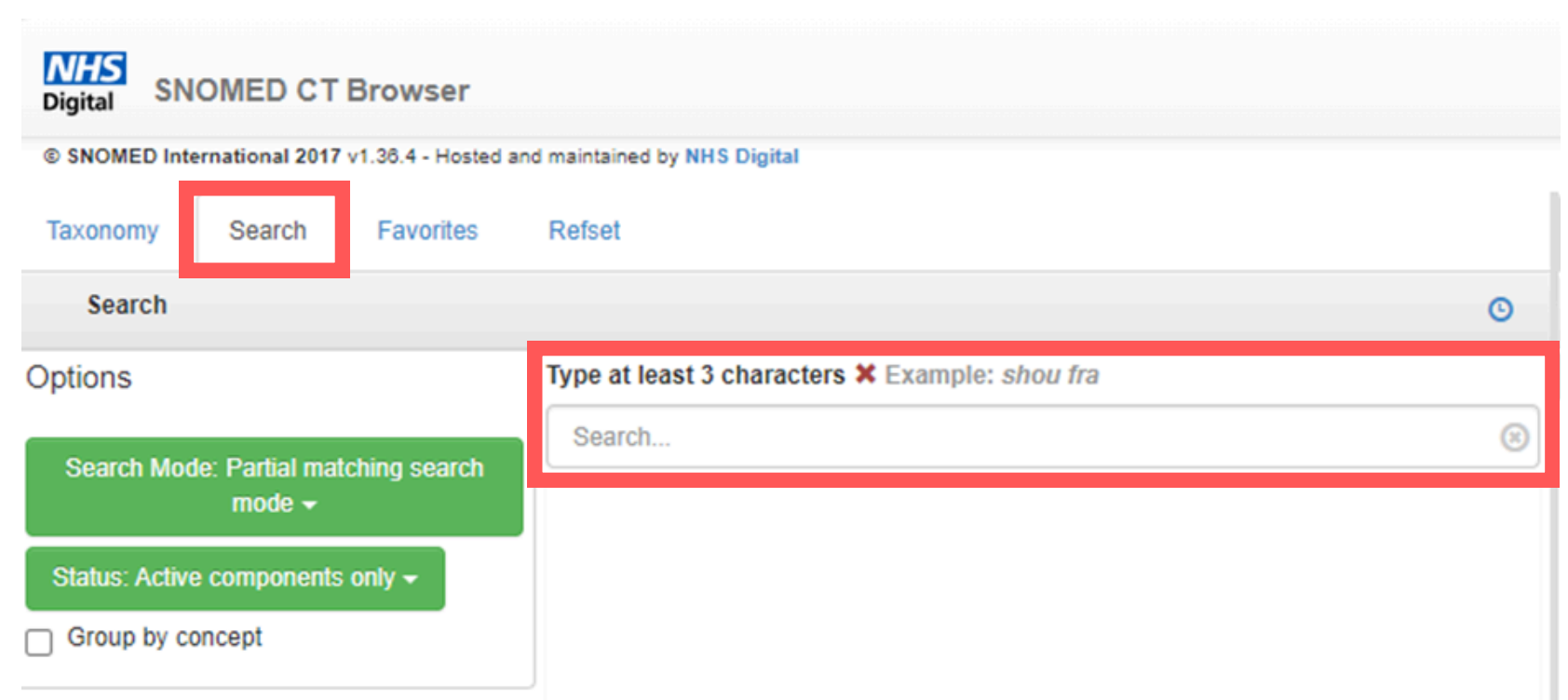
1

Once you select the above link and are on The NHS Digital SNOMED CT Browser, you will need to select **'Go Browsing... United Kingdom Addition'**.



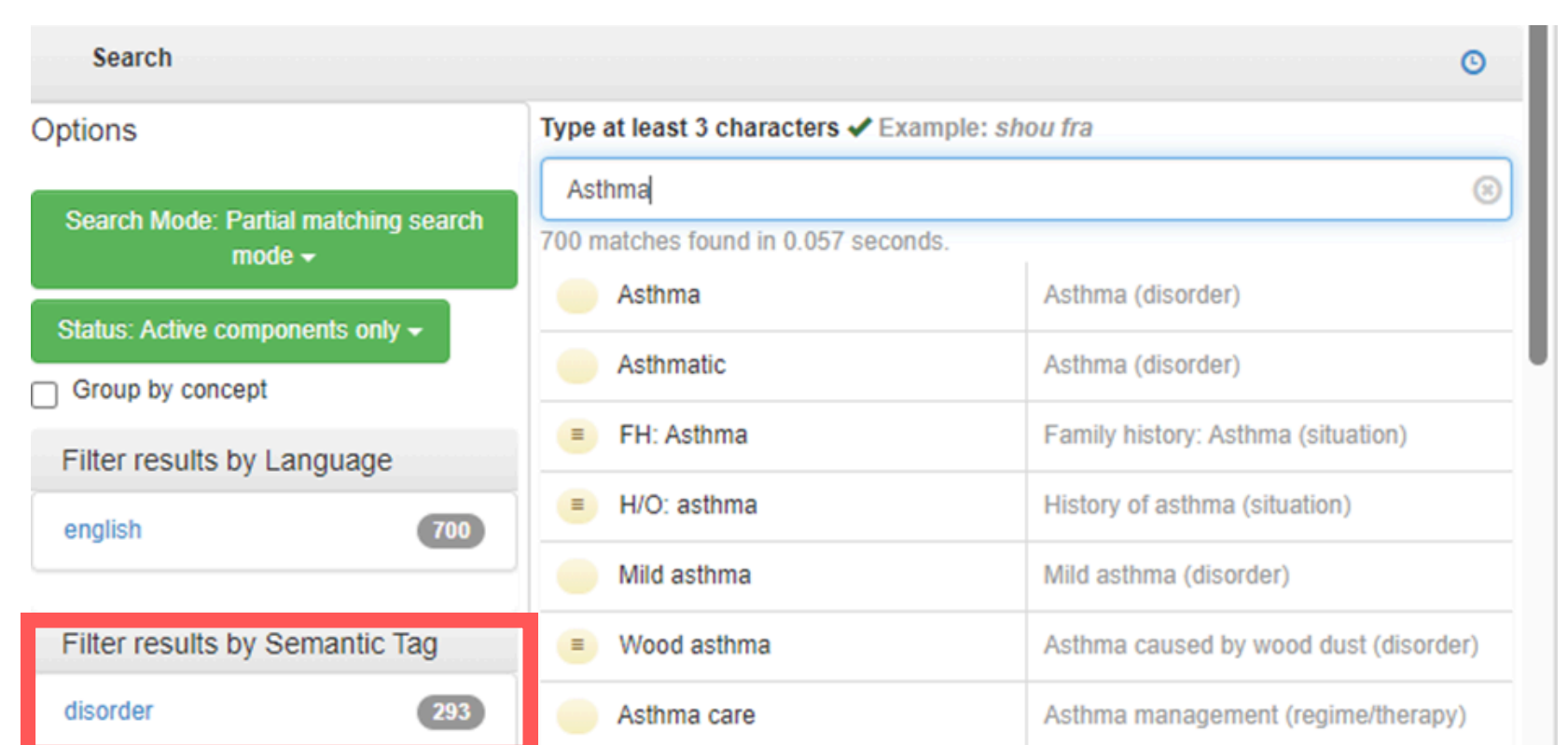
2

You will then need to click on the **'Search'** tab and in the **'Search Box'** enter the Problem/Diagnosis you are looking for.



3

Once you have searched for the Problem/Diagnosis, on the left hand side under **'Filter results by Semantic Tag'** click **'Disorder'**.

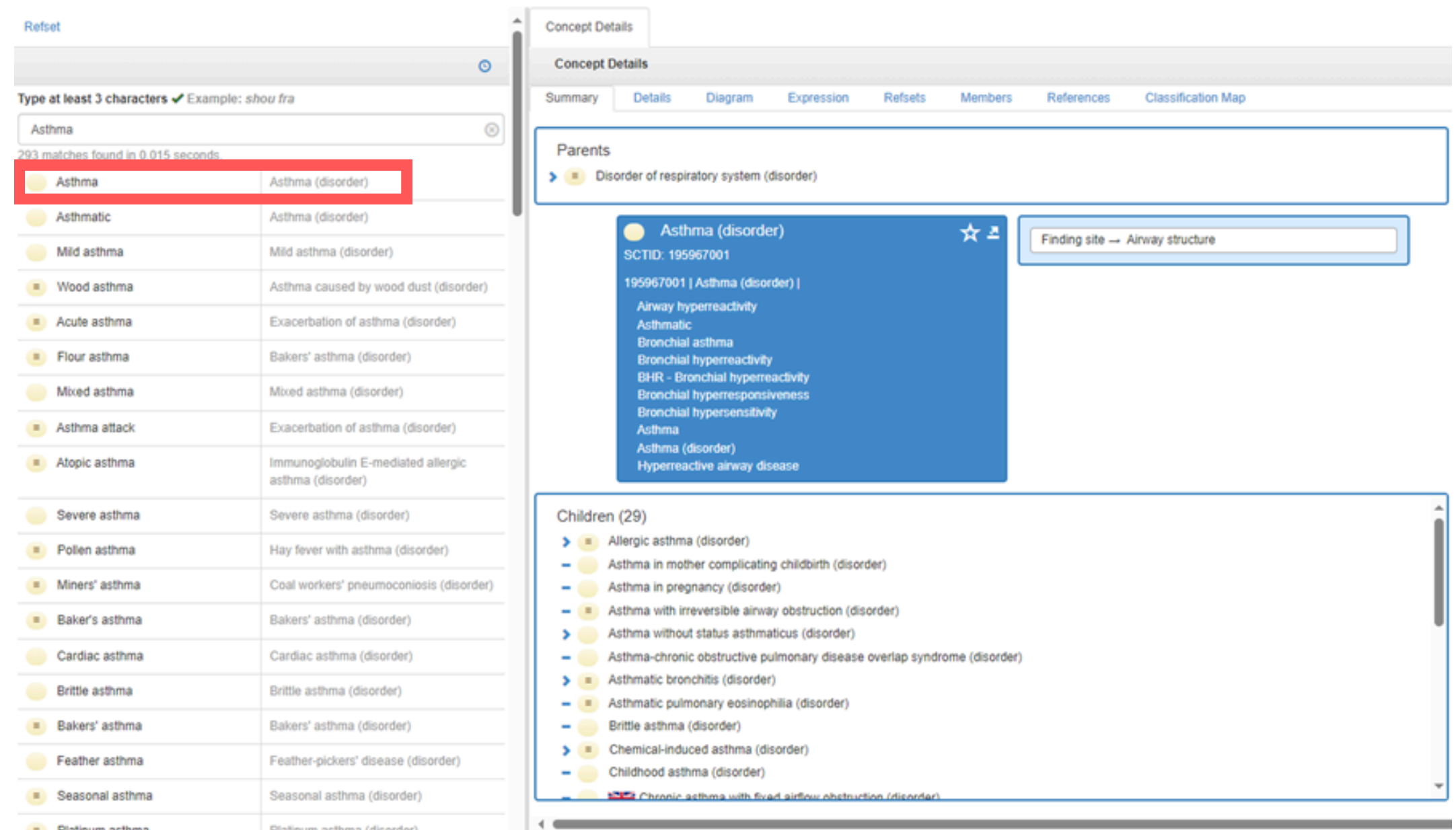


For further information please contact:

✉ leedsth-tr.ImplementationTeam@nhs.net

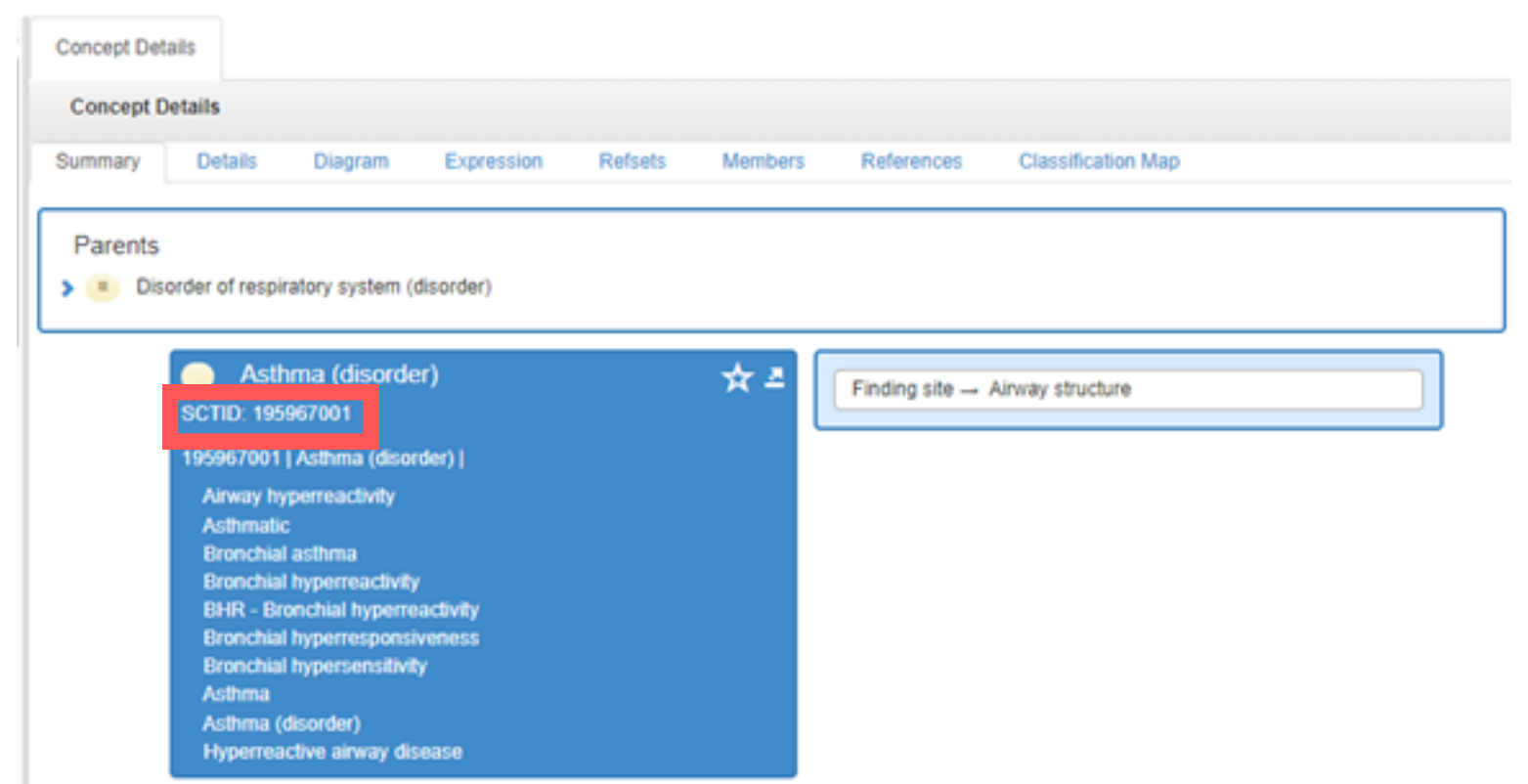
4

You will then need to select the relevant **'Disorder'**. In this example I have selected **'Asthma'**.



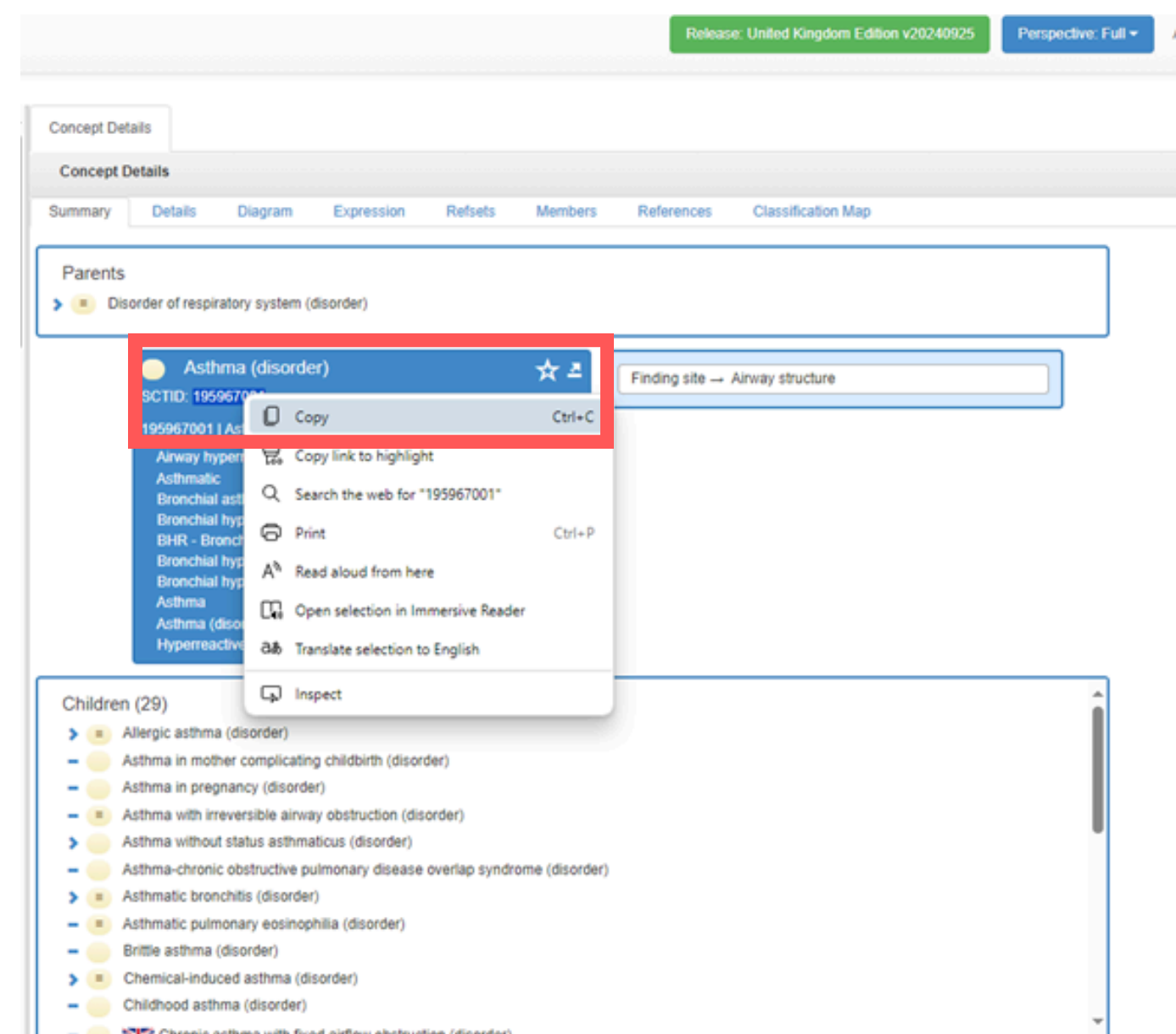
5

You will now be able to see the **SNOMED** code.



6

Highlight and right click on the **SNOMED** code. You will now be able to copy the **SNOMED** code.



Please email the **SNOMED** code and include any context to the Implementation email address: leedsth-tr.ImplementationTeam@nhs.net

For further information please contact:

 leedsth-tr.ImplementationTeam@nhs.net

Useful contacts

Implementation Team

Please contact the **Implementation Team** for Digital support & training on PPM+ functionalities.



Ext: 60599



leedsth-tr.ImplementationTeam@nhs.net

IT Service Desk

Please contact the **IT Service Desk** to:

- Reset your password.
- Report a problem you are having within PPM+ functionality.
- Report a data quality problem within PPM+.
- Request new user accounts for PPM+.
- Disable PPM+ accounts for any leavers from your department.



x26655



<https://lth-dwp.onbmc.com>

Please contact the **IT Training Department** at ITTraining.LTHT@nhs.net if you require **further training on PPM+** or any other Clinical System.



PPM+ Help Site: <https://www.ppmsupport.leedsth.nhs.uk/>

For further information please contact:



leedsth-tr.ImplementationTeam@nhs.net